



# MIDNIGHT

Venture  
• CONTRACT

**ASTRAL 40260 - Galaxy 75230**

Tuile - Tile : 50 cm x 50 cm

Tuile - Tile : 19.68" x 19.68"

Ashlar

**CELESTE 40261 - Chaos 75233**

Tuile - Tile : 50 cm x 50 cm

Tuile - Tile : 19.68" x 19.68"

Ashlar

**SIRIUS 40262 - Nocturne 75236**

Tuile - Tile : 50 cm x 50 cm

Tuile - Tile : 19.68" x 19.68"

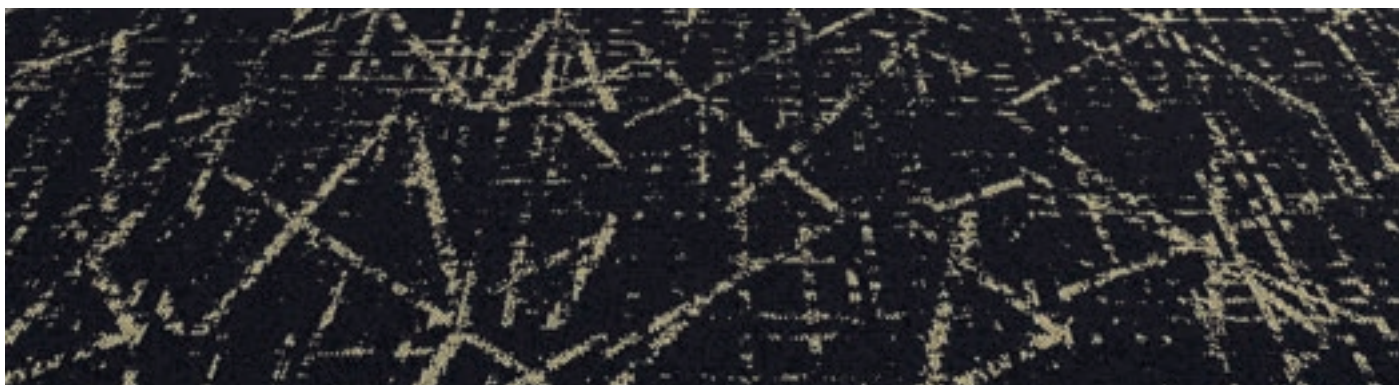
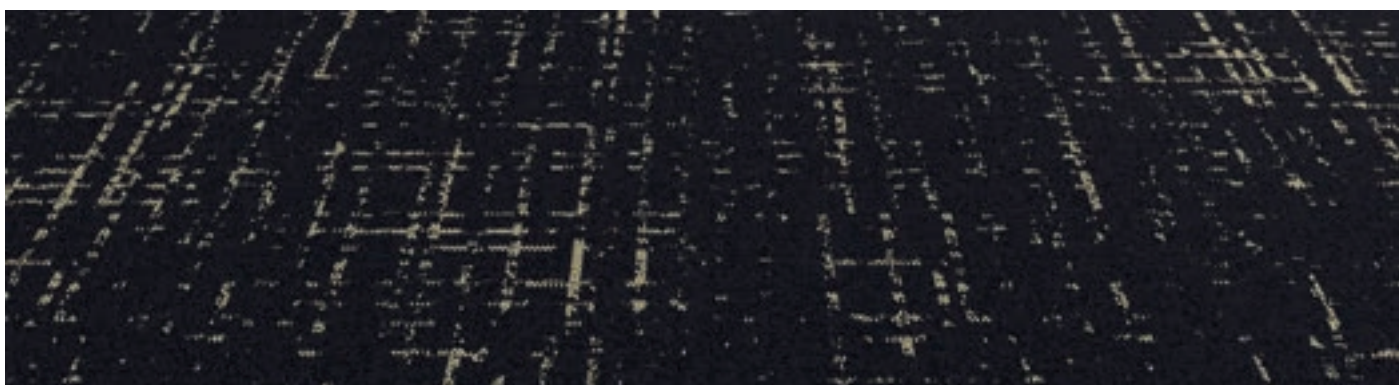
Ashlar

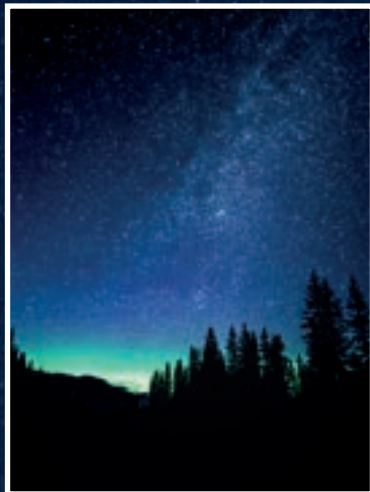
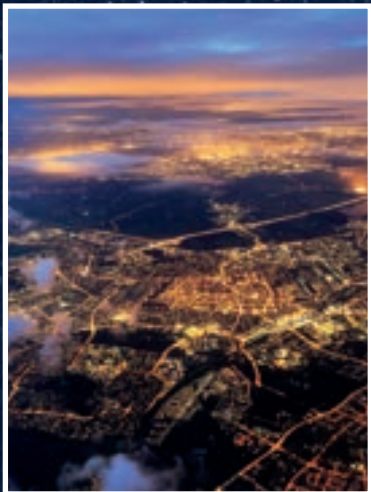
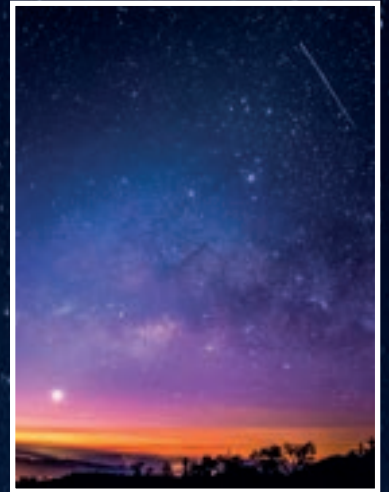
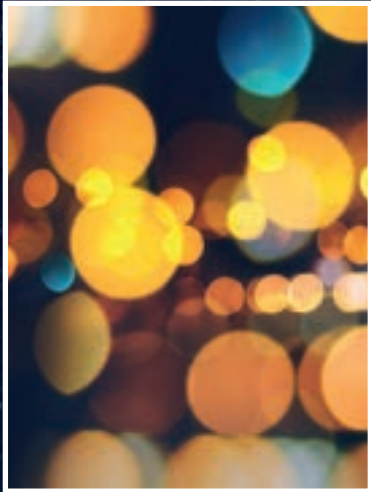
**NEBULA 40263 - Eclipse 75239**

Tuile - Tile : 50 cm x 50 cm

Tuile - Tile : 19.68" x 19.68"

Ashlar





Dans l'obscurité, chaque lumière raconte une histoire, un murmure de l'infini.  
Nos tuiles de tapis, telles des toiles, capturent ces récits lumineux, tissant sous  
vos pieds un univers de possibilités.

In the darkness, each light tells a story, a whisper of the infinite. Our carpet tiles,  
like canvases, capture these luminous tales, weaving beneath your feet a universe  
of possibilities.

## Astral 40260



Galaxy 75230



Interstellar 75231



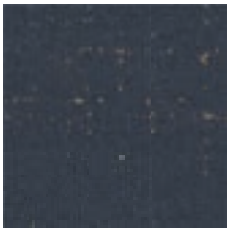
Orbite 50334



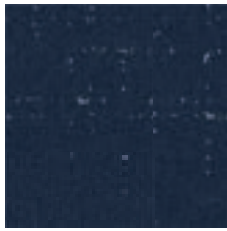
Voyage 30132



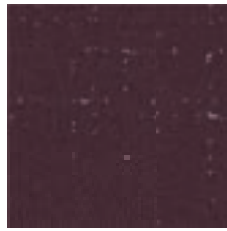
Radiant 75232



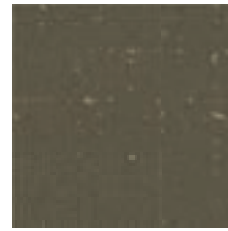
Dimension 60166



Relativité 60165



Néon 40096



Capsule 30133



Phénomène 60164



Particule 15520



Atmosphère 10266



Trajectoire 10267

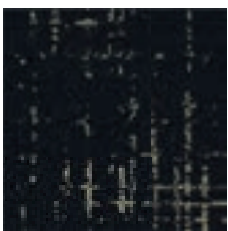


Lumina 10269

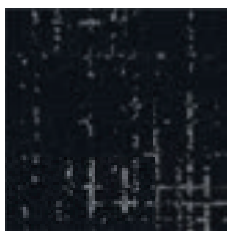


Exploration 10268

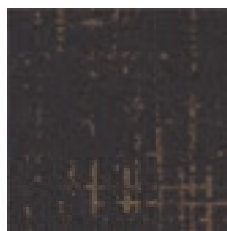
## Celeste 40261



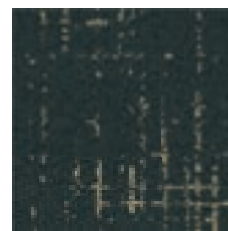
Chaos 75233



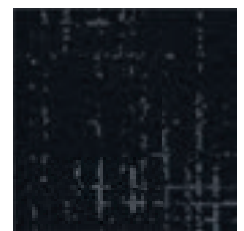
Vortex 75234



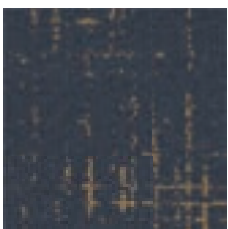
Noyau 50335



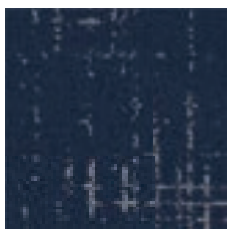
Spectre 30134



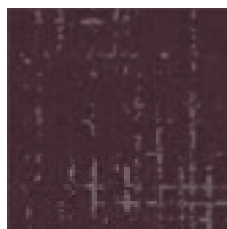
Infinité 75235



Andromède 60169



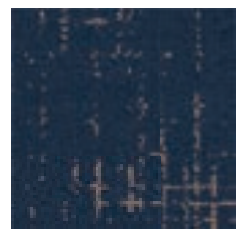
Scintiller 60168



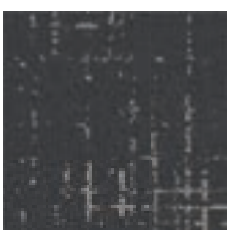
Opacité 40097



Signe 30135



Odysée 60167



Pégase 15521



Pléiade 10270



Cosmic 10271

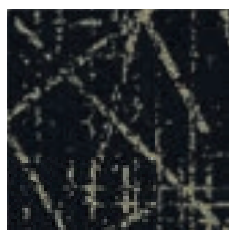


Solar 10273

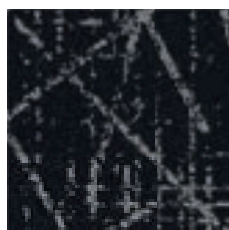


Castor 10272

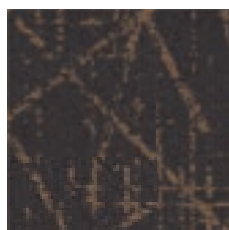
## Sirius 40262



Nocturne 75236



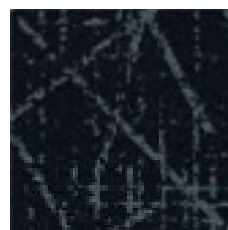
Abyss 75237



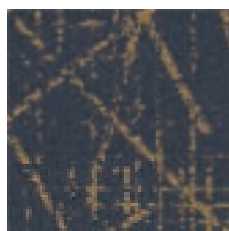
Matière 50336



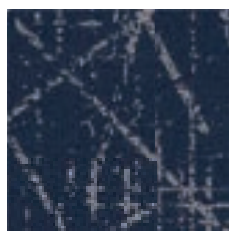
Chandelle 30136



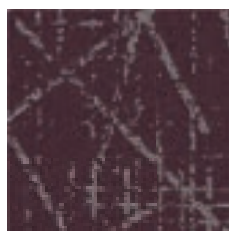
Cassiopeia 75238



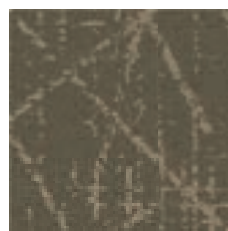
Horizon 60172



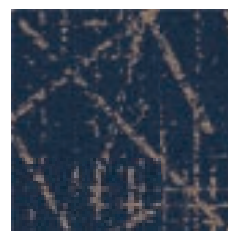
Comet 60171



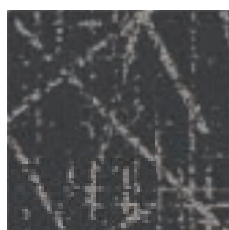
Étincelle 40098



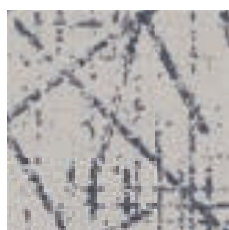
Sphère 30137



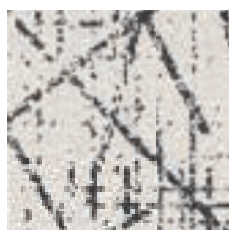
Lyra 60170



Aurora 15522



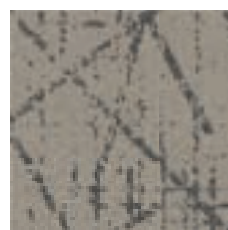
Vega 10274



Polaris 10275

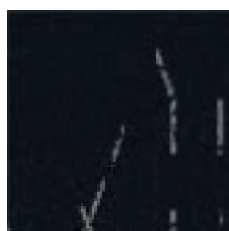


Métropole 10277

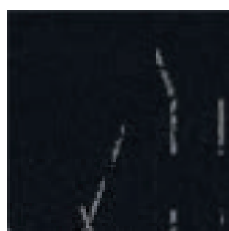


Apollo 10276

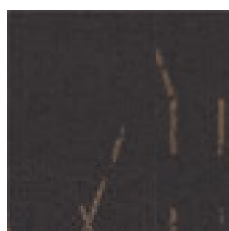
## Nebula 40263



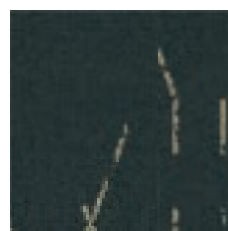
Eclipse 75239



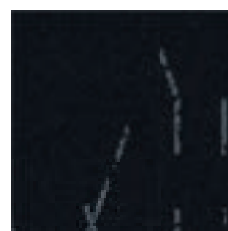
Éclat 75240



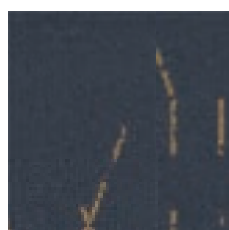
Rêve 50337



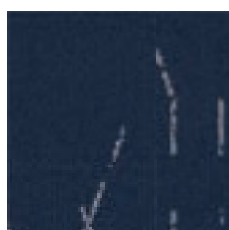
Nova 30138



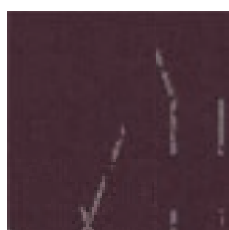
Nadir 75241



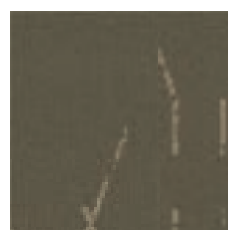
Labyrinthe 60175



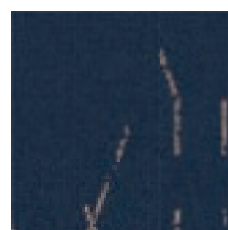
Cosmos 60174



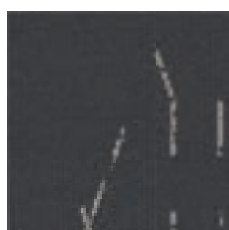
Luna 40099



Zénith 30139



Obscure 60173



Orion 15523



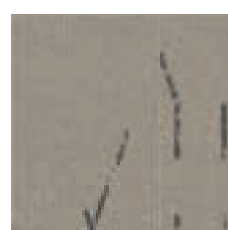
Brilliant 10278



Solaris 10279



Luxe 10281



Stella 10280

ASTRAL 40260 - Galaxy 75230  
CELESTE 40261 - Chaos 75233  
SIRIUS 40262 - Nocturne 75236  
Ashlar

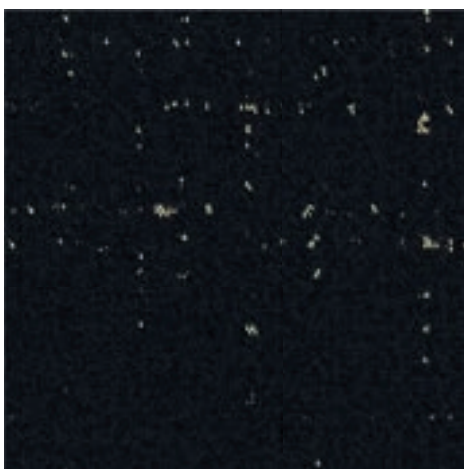




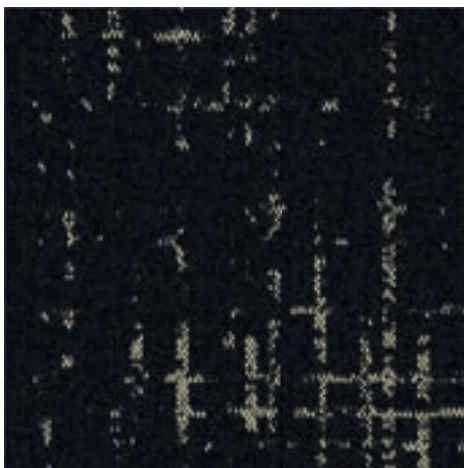




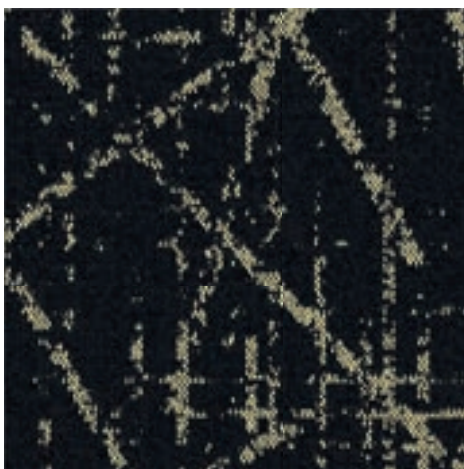
ASTRAL 40260 - Galaxy 75230 CELESTE 40261 - Chaos 75233 SIRIUS 40262 - Nocturne 75236 / Ashlar



Astral 40260 - Galaxy 75230

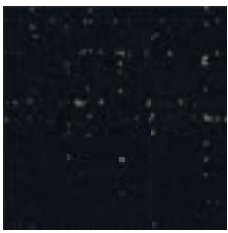


Celeste 40261 - Chaos 75233

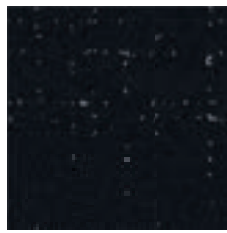


Sirius 40262 - Nocturne 75236

## Astral 40260



Galaxy 75230



Instellar 75231



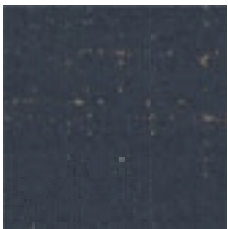
Orbite 50334



Voyage 30132



Radiant 75232



Dimension 60166



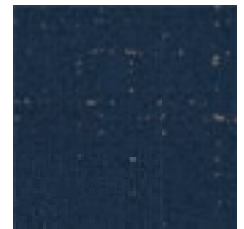
Relativité 60165



Néon 40096



Capsule 30133



Phénomène 60164



Particule 15520



Atmosphere 10266



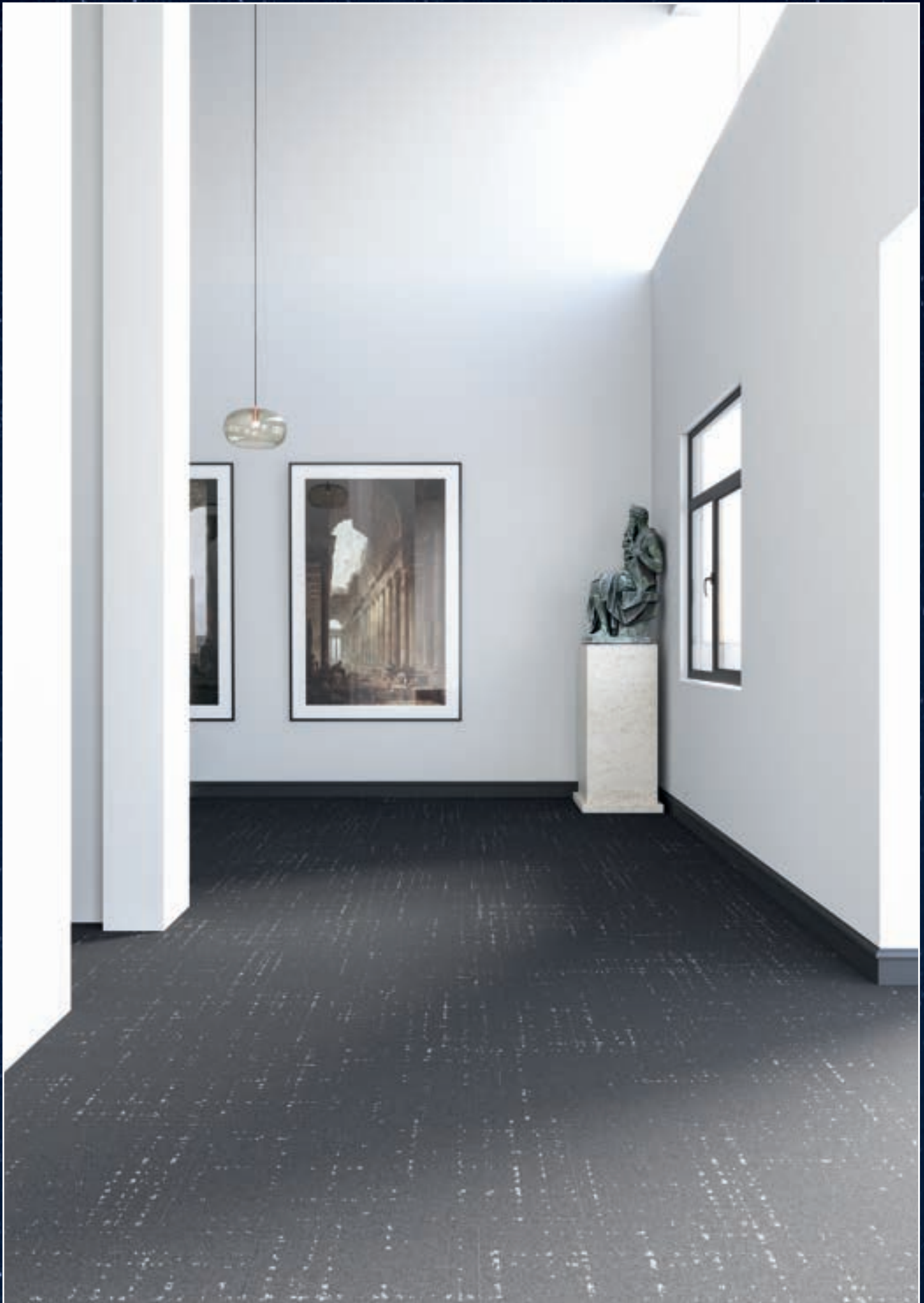
Trajectoire 10267



Lumina 10269



Exploration 10268







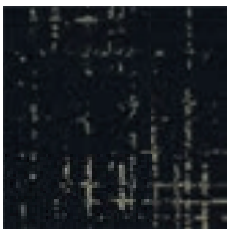
ASTRAL 40260 - Relativité 60165 CELESTE 40261 - Scintiller 60168 / Brick - Brique



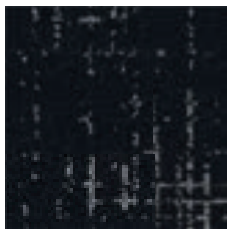




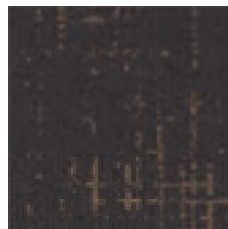
## Celeste 40261



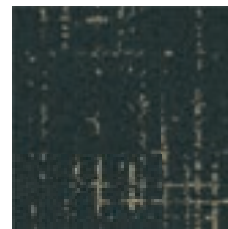
Chaos 75233



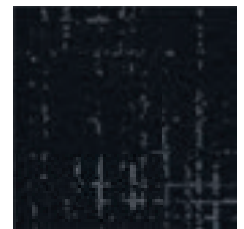
Vortex 75234



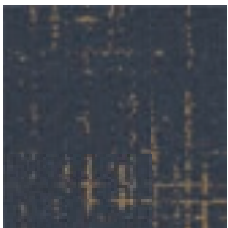
Noyau 50335



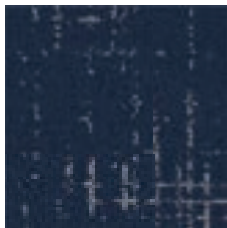
Spectre 30134



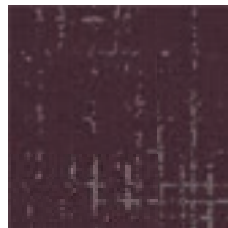
Infinité 75235



Andromède 60169



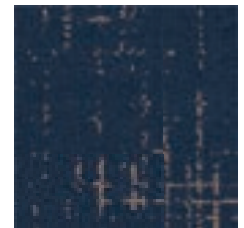
Scintiller 60168



Opacité 40097



Signe 30135



Odysée 60167



Pégase 15521



Pléiade 10270



Cosmic 10271



Solar 10273



Castor 10272





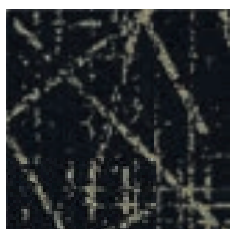




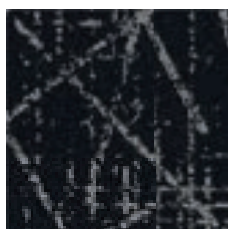


CELESTE 40261 - Andromède 60169 ASTRAL 40260 - Dimension 60166 / Ashlar

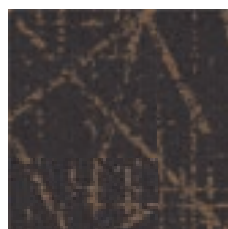
## Sirius 40262



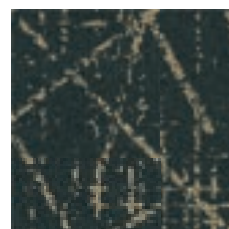
Nocturne 75236



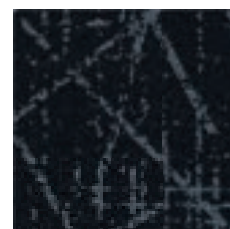
Abyss 75237



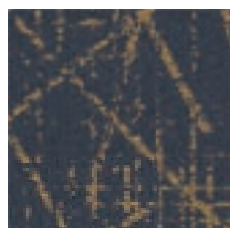
Matière 50336



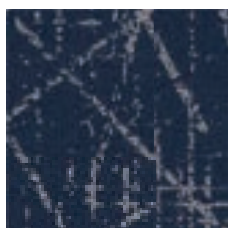
Chandelle 30136



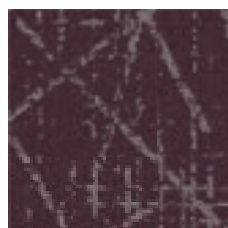
Cassiopeia 75238



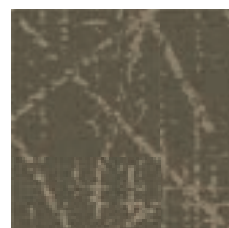
Horizon 60172



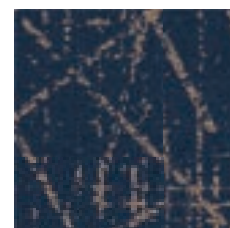
Comet 60171



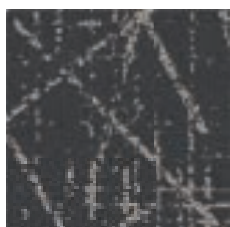
Étincelle 40098



Sphère 30137



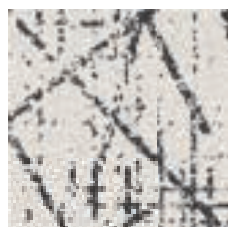
Lyra 60170



Aurora 15522



Vega 10274



Polaris 10275



Métropole 10277



Apollo 10276





Matière 50336

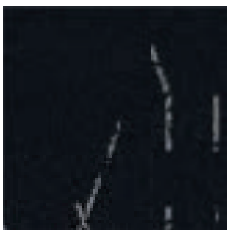




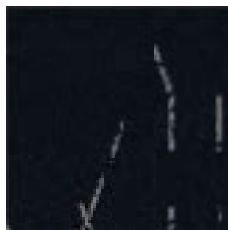




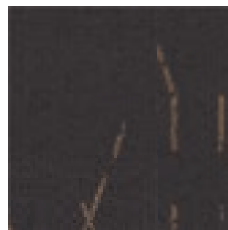
## Nebula 40263



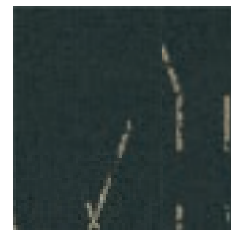
Eclipse 75239



Éclat 75240



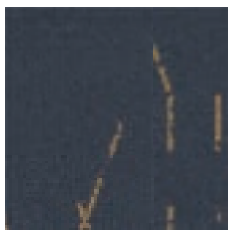
Rêve 50337



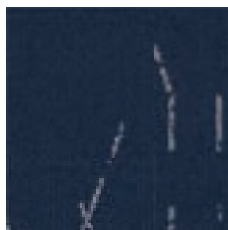
Nova 30138



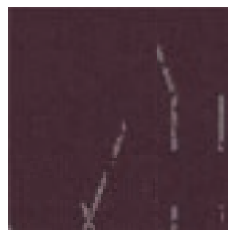
Nadir 75241



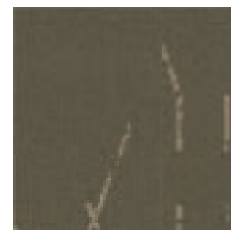
Labyrinthe 60175



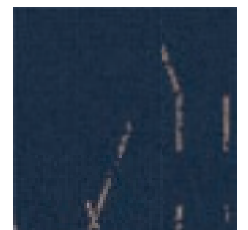
Cosmos 60174



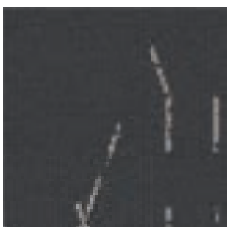
Luna 40099



Zénith 30139



Obscure 60173



Orion 15523



Brilliant 10278



Solaris 10279



Luxe 10281



Stella 10280









## Nylon régénéré

Pour la première fois, les tapis antitaches ne sont pas créés au détriment de l'environnement.

L'imagination est infinie. Tout comme l'est ECONYL®

Notre désir de créer et d'acheter de nouveaux produits est infini, mais les ressources, elles, ne le sont pas. Avec ECONYL®, il est maintenant possible de produire de nouveaux tapis tout en préservant l'environnement.

Le nylon régénéré ECONYL® transforme les problèmes causés par les déchets et résidus de textile en autant de solutions de modes et de designs intérieurs exceptionnels. ECONYL® est fabriqué en récupérant les déchets de nylon – tels que des filets de pêche des océans et de l'aquaculture, les déchets de tissus des usines et les tapis destinés à l'enfouissement – en les transformant en fil de nylon vierge de grande qualité.

### Tapis antitaches

Concevoir des tapis antitaches n'a jamais été aussi simple que depuis la création de la nouvelle fibre «ECONYL® Stay-Clean». La fibre de nylon 6 assure une protection optimale contre les taches. Elle est composée de fibres 100% nylon régénéré et teint en solution. Le fil intrinsèquement résistant aux taches et ses polymères présentent des caractéristiques de polymère uniques qui perdurent pendant toute la durée de vie du tapis. Cela garantit un nettoyage efficace en utilisant uniquement de l'eau.

### Un fil sur mesure

Fabriquée avec un polymère modifié, une section transversale spéciale et une technologie de finition de pointe, cette fibre de nylon 6 teinte allie propreté et résistance maximale à l'usure.

Notre mélange spécial garantit :

- RÉSISTANCE À LA LUMIÈRE
- STABILITÉ DE LA COULEUR
- RÉSISTANCE AUX RAYONS UV

### Développement durable

«ECONYL® StayClean» est fabriqué en récupérant des déchets de nylon, tels que des filets de pêche utilisés en mer et en aquaculture, des déchets de tissus d'usines et des tapis destinés aux sites d'enfouissement. Grâce au système de régénération ECONYL®, ces déchets sont transformés en fil de nylon régénéré pouvant être recyclé à l'infini.

Pas de déchets, pas de nouvelles ressources : seulement des possibilités infinies. En plus d'offrir une solution concrète contre l'accumulation de déchets textiles, «ECONYL® StayClean» est également une excellente alternative pour contrer les effets néfastes des changements climatiques. Il réduit jusqu'à 80 % l'impact du réchauffement climatique du nylon par rapport aux autres matériaux issus du pétrole. De plus, les tapis fabriqués avec la fibre «ECONYL® StayClean» émettent une quantité négligeable de COV total. Enfin, ECONYL® contribue aux crédits LEED v.4 dans quatre catégories.

Pour l'information complète, visitez [www.econyl.com](http://www.econyl.com)

## Regenerated nylon

For the first time, stain-free carpets don't have to come at the expense of the environment.

Imagination is infinite. So is ECONYL®

Our appetite to create new products and buy new products is infinite. The planet resources aren't. But it's ok because we have both: new products and a better environment.

ECONYL® Regenerated Nylon turns waste problem into exceptional fashion and interior solutions. It's made by recovering nylon waste – such as fishing nets from the oceans and aquaculture, fabric scraps from mills and carpets destined or landfill – and turning it into virgin quality nylon yarn.

### Stain-free carpet

Stain-free carpets have never been so easy with the new ECONYL® StayClean fiber. This solution dyed Nylon 6 fiber is made from 100% regenerated Nylon and ensures ultimate stain protection. The intrinsically stain-resistant yarn carries unique polymer characteristics that last the entire lifespan of the carpet, guaranteeing an easy water-only treatment.

### A tailor made yarn

Produced with a modified polymer, a special cross section and a state-of-art finishing technology, this solution dyed Nylon 6 fiber assures maximum cleanability and wear and tear resistance.

Our special masterbatch guarantees:

- LIGHT FASTNESS
- COLOR FASTNESS
- UV RESISTANCE

### Sustainability

ECONYL® StayClean is made by recovering nylon waste such as fishing nets from the ocean and aquaculture, fabric scraps from mills and carpets destined for landfills. Through the ECONYL® Regeneration System this waste is transformed into regenerated nylon yarn that can be recycled infinitely.

No waste. No new resources. Just endless possibilities. As well as being a solution on waste, ECONYL® StayClean is also better when it comes to climate change. It reduces the global warming impact of nylon by up to 80% compared with the material from oil. Further, ECONYL® StayClean has a negligible contribution of carpet total VOC. ECONYL® contributes to LEED v.4 credits in four categories.

For complete information, visit [www.econyl.com](http://www.econyl.com)



## PERFORMANCE & DURABILITÉ:

### Ratio de modification

Le ratio de modification estime la performance d'une fibre en utilisant un calcul mathématique basé sur la rondeur de la fibre. Plus la fibre est ronde, plus le ratio de modification est faible et meilleure sera la performance du tapis.

- Plus le ratio est petit, plus la fibre sera résistante aux taches et meilleure sera la résistance à l'usure du tapis.
- Plus le ratio est grand, plus la fibre risque de piéger et de retenir la saleté, de s'écraser ou de s'emmêler prématurément
- La forme des fibres dans le système de fils d'un tapis est importante car elle affecte l'aspect et les performances du tapis, notamment sa durée de vie, sa facilité de nettoyage et la qualité de ses fibres.

## PERFORMANCE & DURABILITY:

### Modification Ratio

Modification ratio estimates a fiber's performance, using a mathematical calculation based on the roundness of the fiber. The rounder the fiber, the lower the modification ratio, and the better the carpet will perform.

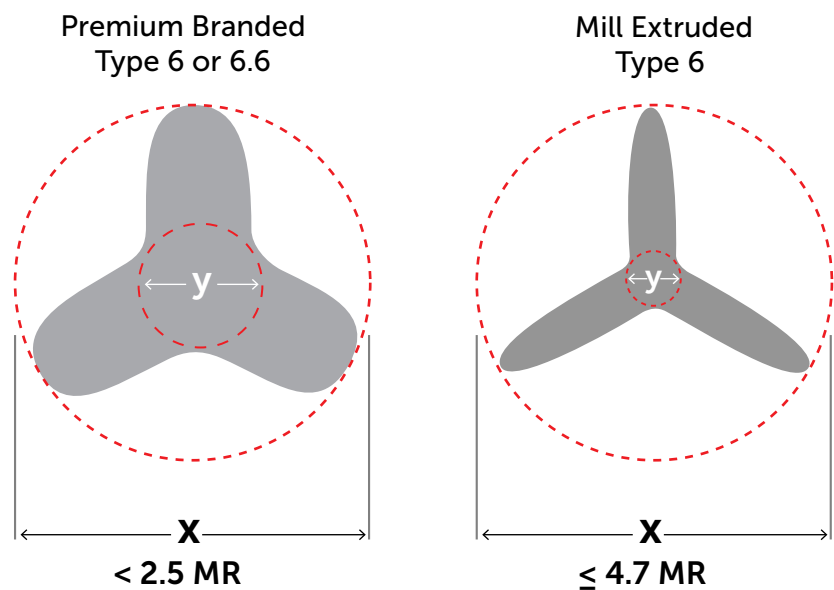
- The smaller the ratio, the more soil resistant the fiber will be and the better the carpet will wear.
- The larger the ratio, the more likely the fiber will trap and hold soil and the carpet might experience premature pile crush or matting.
- The shape of the fibers in a carpet's yarn system is important because it affects the carpet's appearance and performance – including how long the carpet can be expected to last, how easy it will be to clean, and how well the fibers will resist soil and dirt.

#### MODIFICATION RATIO

Geometrical correlation to appearance and durability and maintenance

#### RATIO DE MODIFICATION

Corrélation géométrique de l'apparence, la durabilité et l'entretien



Modification ratio / Ratio de modification:  $x/y$

ASTRAL • 40260 CELESTE • 40261 SIRIUS • 40262 NEBULA • 40263

SURFACE TEXTURE / SURFACE DU TAPIS

Multilevel loop • Bouclé motif à niveaux multiples

DIMENSIONS



Broadloom (Permafuse XL) 79.25" / 201 cm • Tapis en rouleau : 79.25" / 201 cm  
 Commercial Unitary Backing system: 79.25" / 201 cm • UNILOC // Système d'endos unitaire commercial : 79.25" / 201 cm  
 Pattern repeat for Roll: 81"x 81" / 205.74 cm x 205.74 cm • Répétition du motif pour rouleau: 81" x 81" / 205.74 cm x 205.74 cm

PILE FIBER CONTENT / MÉLANGE DE FIBRE

100% AQUAFIL BCF ANTI-STATIC ECONYL® • NYLON 100% Aquafil filament continu antistatique nylon ECONYL®

DYE SYSTEM / SYSTÈME DE TEINTURE

Solution Dyed • Teinture en solution

PRIMARY BACKING / ENDOS PRIMAIRE

Non-Woven Polyester • Polyester non-tissé

SECONDARY BACKING / ENDOS SECONDAIRE

Fiberglass Reinforced Thermoplastic - PermaFuse™ Technology - Phthalate Free  
 Module de P.V.C. renforcé de fibre de verre - Technologie d'endos PermaFuse<sup>MC</sup> - Sans phthalate

IMPERIAL / IMPÉRIAL METRIC / MÉTRIQUE

PILE WEIGHT / POIDS DU VELOURS 21.0 oz / y<sup>2</sup> • v<sup>2</sup>  
 GAUGE / CALIBRE 1/12 ga  
 STITCHES / RANGÉES DE TOUFFES 12.0 / in • po  
 PILE HEIGHT / HAUTEUR DU VELOURS 0.195 in • po  
 PILE THICKNESS / ÉPAISSEUR DU VELOURS 0.118 in • po  
 DENSITY FACTOR / FACTEUR DE DENSITÉ 6386  
 TOTAL WEIGHT / POIDS TOTAL 112.04 oz / y<sup>2</sup> • oz / v<sup>2</sup>

712 g/m<sup>2</sup>  
 47.2 / 10 cm  
 47.2 / 10 cm  
 4.96 mm  
 3.0 mm  
 9.18 ktex  
 3798 g/m<sup>2</sup>

FLAMMABILITY / INFLAMMABILITÉ

ASTM E-648 Class I

SMOKE DENSITY / DENSITÉ DE LA FUMÉE

ASTM E-662 < 450 Flaming mode • ASTM E-662 < 450 mode de combustion

ANTI-STATIC PROPERTIES / PROPRIÉTÉ ANTISTATIQUE

< 3.0 kv at 20% r.h. & 21° C • < 3.0 kv à 20% h.r. & 21° C

DIMENSIONAL STABILITY / STABILITÉ DIMENSIONNELLE

< 0.05 %

LIGHTFASTNESS / SOLIDITÉ À LA LUMIÈRE

L5 or Better / L5 ou supérieur

RESISTANCE TO WET CLEANING  
 RÉSISTANCE AU NETTOYAGE HUMIDE

Grey Scale 5  
 5 à l'échelle des gris

ACOUSTIC / ACOUSTIQUE ASTM-E3133

70

ACOUSTIC / ACOUSTIQUE ASTM-E492

60

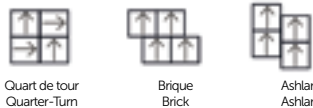
WARRANTY INFORMATION / GARANTIES

Lifetime Limited Commercial Wear & Anti-Static • Garantie limitée à vie contre l'usure commerciale et antistatique  
 Lifetime Limited Commercial Against Delamination • Garantie limitée à vie contre la délamination  
 Lifetime Limited Commercial on Dimensional Stability • Garantie limitée à vie de la stabilité dimensionnelle  
 Lifetime Limited Against Backing Deterioration • Garantie limitée à vie contre la détérioration de l'endos

ENVIRONMENTAL / ENVIRONNEMENT

Indoor air quality no. GLP 3315 • No Qualité air intérieur GLP 3315

INSTALLATION METHODS / MÉTHODES D'INSTALLATION



Quart de tour  
Quarter-Turn

Brique  
Brick

Ashlar  
Ashlar



Venture  
 ■ CONTRACT



CONTACT US  
 NOUS JOINDRE

1 888-227-0607  
 info@venturecarpets.com

www.venturecarpets.com

Head Office • Siège social  
 Venture Carpets inc. • Tapis Venture inc.  
 700 120<sup>e</sup> rue Saint-Georges, Québec

Factory • Usine  
 35 Dussek Street,  
 Belleville, Ontario

CONTACT SALES  
 CONTACTEZ LES VENTES

